



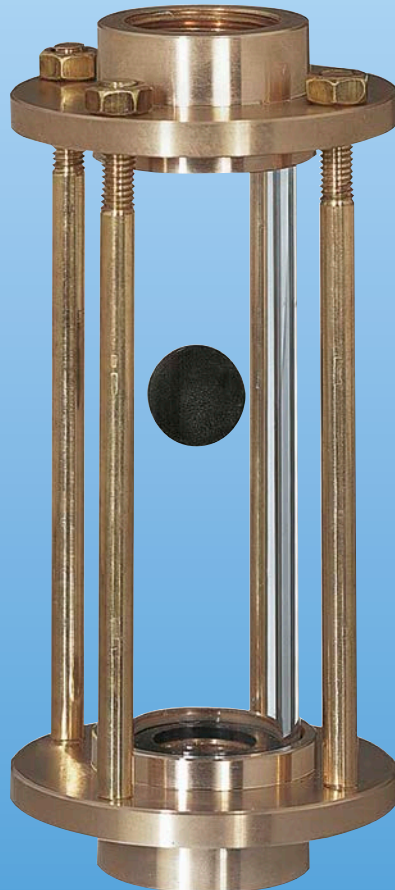
Flow Indicators for Vertical Installation

option: ball type



measuring
•
monitoring
•
analysing

DAB



- p_{\max} : 6 bar; t_{\max} : 100 °C
- Connection: G 1/2 ... G 2
- Material: red cast iron RG-5

96



KOBOLD companies worldwide:

AUSTRALIA, AUSTRIA, BELGIUM, BULGARIA, CANADA, CHINA, CZECHIA, FRANCE, GERMANY, GREAT BRITAIN, HUNGARY, INDIA, INDONESIA, ITALY, MALAYSIA, MEXICO, NETHERLANDS, PERU, POLAND, REPUBLIC OF KOREA, RUSSIA, SPAIN, SWITZERLAND, THAILAND, TUNISIA, TURKEY, USA, VIETNAM

KOBOLD Messring GmbH
Nordring 22-24
D-65719 Hofheim/Ts.
Head Office:
+49(0)6192 299-0
+49(0)6192 23398
info.de@kobold.com
www.kobold.com

Description

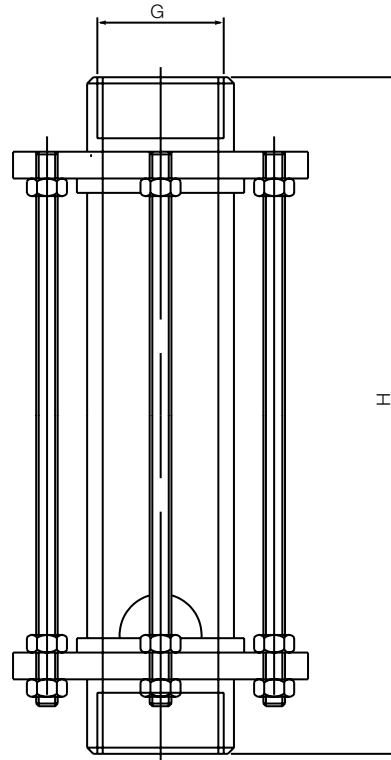
Flow indicator of red cast iron for the observation of flowing media with threaded bolts for installation in pipework.

Technical Details

Material

Thread connection:	red cast iron RG-5
Supports:	red cast iron RG-5
Glass:	borosilicate glass
Sealing:	PTFE
Threaded bolts:	brass MS-58
Ball 15 and 20 mm:	PA 6.6 density 1.13 g/cm ³
Ball 30 mm:	rubber density 1.46 g/cm ³
Threaded bolts:	according to flow range

Dimensions



Model	P _{max}	t _{max}	G	Height H [mm]	Glass cylinder D x length [mm]	Weight [kg]	Ball diameter [mm]
DAB-..00HR15	6 bar	100 °C	G ½	92	16.5 x 50	0.5	10
DAB-..01HR20	6 bar	100 °C	G ¾	137	32 x 100	0.65	15
DAB-..02HR25	6 bar	100 °C	G 1	145	40 x 100	0.95	20
DAB-..03HR32	6 bar	100 °C	G 1 ¼	145	40 x 100	1.1	20
DAB-..04HR40	6 bar	100 °C	G 1 ½	145	50 x 100	1.18	20
DAB-..05HR50	6 bar	100 °C	G 2	150	60 x 100	1.25	30

Order Details (Example: DAB-1101HR20)

Connection thread G	DAB without ball	DAB with ball
G ½	DAB-1100HR15	DAB-2100HR15
G ¾	DAB-1101HR20	DAB-2101HR20
G 1	DAB-1102HR25	DAB-2102HR25
G 1 ¼	DAB-1103HR32	DAB-2103HR32
G 1 ½	DAB-1104HR40	DAB-2104HR40
G 2	DAB-1105HR50	DAB-2105HR50